

State of Wyoming Corner Record

(In compliance with the *CORNER PERPETUATION AND FILING ACT*, Wyoming Statutes, 1997, Section 33-29-140 et. seq., and the Rules and Regulations of the Board of Registration for Professional Engineers and Professional Land Surveyors)

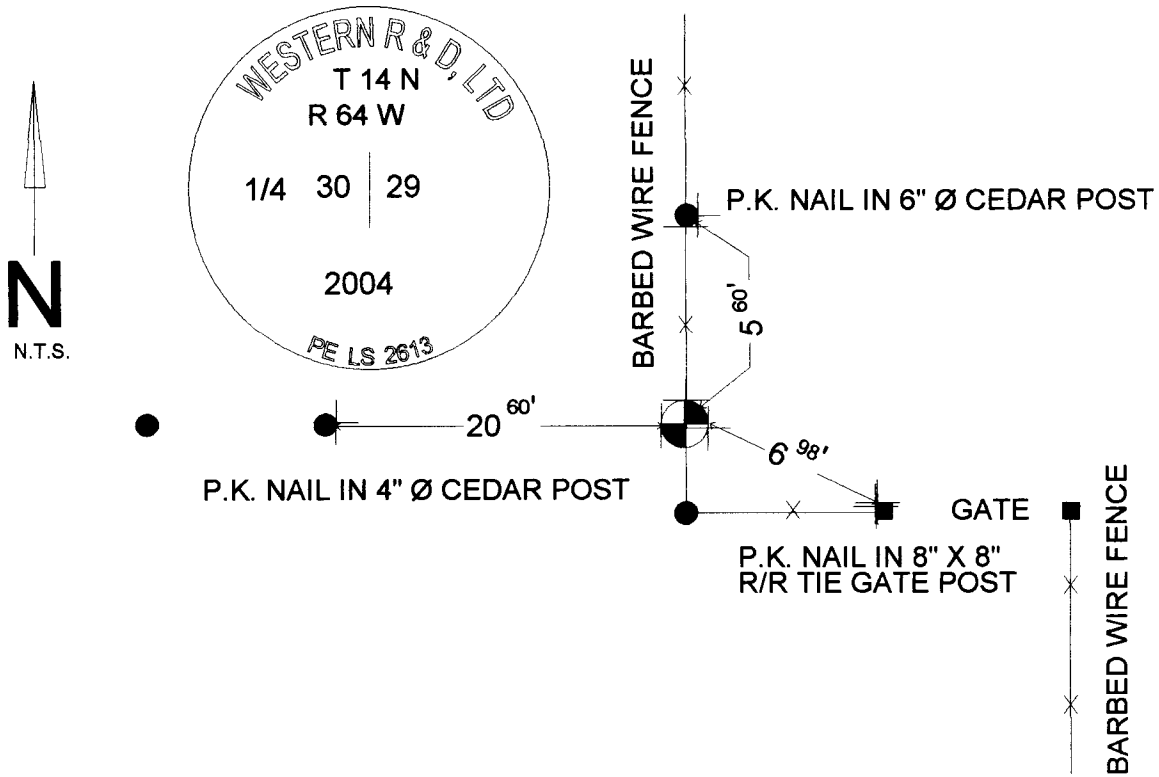
Reverse side of this form may be used if more space is needed.

Record of original survey and citation of source of historical information (if corner is lost or obliterated). Description of corner monumentation evidence found and/or monument and accessories established to perpetuate the location of this corner. Sketch of relative location of monument, accessories, and reference points with course and distance to adjacent corner(s) (if determined in this survey). Method and rationale for reestablishment of lost or obliterated corner.

RECORD: SET A SANDSTONE 17" X 9" X 4" FOR THE 1/4 SECTION

MONUMENT FOUND: FOUND A GRANITE STONE 6"x7" AT 2" ABOVE SURFACE OF GROUND WITH 1/2" REBAR DRIVEN ALONG THE WEST SIDE. NO "1/4" CARVING WAS VISIBLE. EXCAVATED THE STONE AND FOUND "1/4" CARVED ON THE SOUTH FACE. THE STONE WAS SET NEXT TO A 6" DIAMETER CEDAR FENCE POST. FENCE RUNS NORTH THIS POST AND JOGS 20' +/- EAST THEN RUNS NORTH. WE SET A 2 1/2" AL. CAP ON A 5/8" X 24" REBAR WHERE THE STONE WAS FLUSH WITH THE GROUND. BURIED THE STONE UPSIDE DOWN 1' EAST OF THE CAP & BAR. WE REMOVED THE 1/2" REBAR SO NOT TO BE CONFUSED WITH THE 5/8" BAR & CAP. CAP IS STAMPED AS INDICATED. THE EXCAVATED STONE MEASURED 6"x7"x12".

REFERENCES: AS NOTED



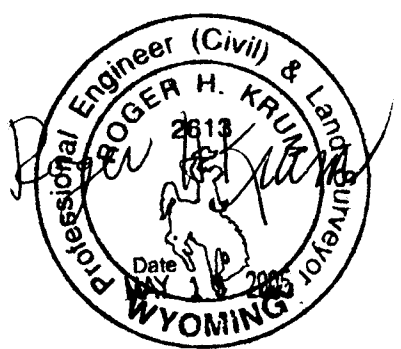
Date of Field Work: JAN 2004 Office Reference: T14NR64W-200240

CROSS INDEX DIAGRAM

	1	2	3	4	5	6	7	8	9	10	11	12	13	14	15	16	17	18	19	20	21	22	23	24	25
A																									
B																									
C		6																							
D			5																						
E				4																					
F					3																				
G						2																			
H							1																		
J																									
K																									
L																									
M																									
N																									
O																									
P																									
Q																									
R																									
S																									
T																									
U																									
V																									
W																									
X																									
Y																									
Z																									

Firm/Agency, Address
 Roger H. Krum, PE & PLS2613
 Western R & D, Ltd.
 5908 Yellowstone Rd Suite B
 Cheyenne, Wyoming 82001
 Telephone Number: 307 632 5656

This corner record was prepared by me or under my direction and supervision.
 SEAL & SIGNATURE



Corner Name: 1/4 CORNER Section: 29 T14N R64W; 6th P.M. Cross-Index No.: T-5